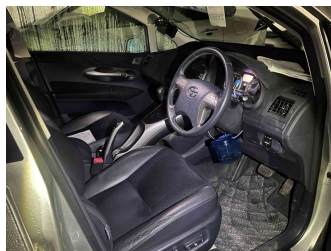
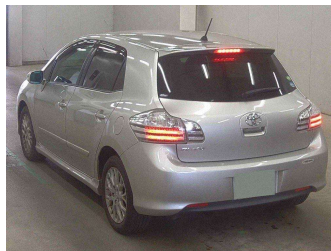


2008 Toyota Blade



Purchase Price **\$12,990**
Includes GST, Registration & Licensing

No Deposit Finance Available To Approved Customers

Gain peace of mind with Mechanical Breakdown Insurance. **Ask us how.**



an ASSURANT company

Top features

- » ABS Brakes
- » Auto Headlights
- » Bluetooth
- » Dual Zone Climate
- » Electric Seats
- » Factory sport alloys
- » Fog Lights
- » Half leather
- » Keyless Start
- » LOW MILEAGE
- » Reversing Camera
- » Side Airbags
- » Smart Key Entry
- » Tinted Windows
- » Tiptronic
- » Traction Control

Body Style
Hatch

Odometer
46,025 km

Engine
2400 cc


Fuel Type
Petrol

Transmission
Full Auto

Wheels
-

VIN
7AT0H656X24031865

Interior
-

Safety

Based on 2023 VSRR rating

Reg No.
-

Ext Colour
Silver

History
-

Seats
-

CO2 Emissions
★ ★ ★ ★ ☆ ☆
202 grams/km

Energy Economy
★ ★ ☆ ☆ ☆ ☆
Annual fuel cost of \$3,410
8.7L per 100km

Cost per year is an estimate based on petrol price of \$2.80 per litre and an average distance of 14000 km. Emissions and Energy Economy figures standardised to 3P WLTP.

Stock ID: 5439



Beresford Auto Sales 2018 Ltd | Phone 06 870 8011 | Email sales@beresfordautosales.co.nz
720 Heretaunga Street West, Saint Leonards, Hastings 4120, New Zealand
www.beresfordautosales.co.nz