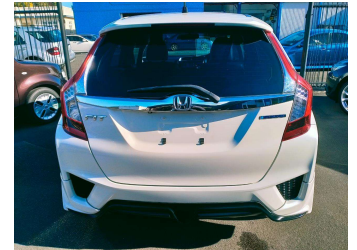
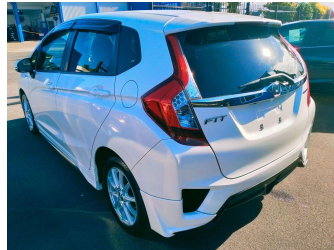
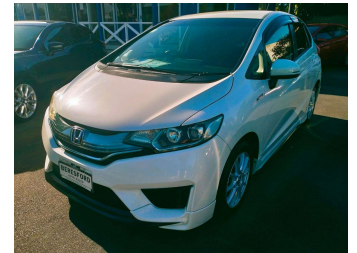


2014 Honda Fit Hybrid



Purchase Price

\$14,990

Includes GST, Registration & Licensing

No Deposit Finance Available To
Approved Customers

Gain peace of mind with
Mechanical Breakdown
Insurance. **Ask us how.**



Top features

- » ABS Brakes
- » AIR BAGS
- » Alloy Wheels/Mags
- » Auto Headlights
- » Body Kit
- » Climate Control
- » Cruise Control
- » Electric windows
- » Half leather
- » Honda Magic Seats
- » Hybrid
- » Keyless Start
- » Multi-Function Steerin...
- » Reversing Camera
- » Smart Key Entry
- » Tinted Windows
- » Traction Control

Body Style

Hatch

Odometer

94,051 km

Engine

1496 cc, Hybrid

Fuel Type

Hybrid

Transmission

Full Auto

Wheels

-

VIN

7AT08G2YX24081474

Interior

Black, Cloth

Safety



Based on 2023 UCSR rating
for 14-20 models

Reg No.

-

Ext Colour

PEARL

History

Ex-Overseas

Seats

Cloth

CO2 Emissions

★★★★☆

92 grams/km

Energy Economy

★★★★☆

**Annual fuel cost of \$1,530
3.9L per 100km**

Cost per year is an estimate based
on petrol price of \$2.80 per litre and
an average distance of 14000 km.
Emissions and Energy Economy
figures standardised to 3P WLTP.

Stock ID: 5419



Beresford Auto Sales 2018 Ltd | Phone 06 870 8011 | Email
sales@beresfordautosales.co.nz
720 Heretaunga Street West, Saint Leonards, Hastings 4120, New Zealand
www.beresfordautosales.co.nz